

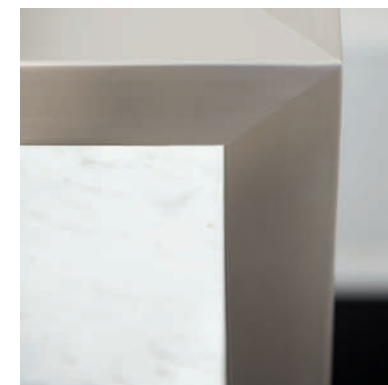
DECORAGE



DECORAGE

B E R N H A R D T

While the best furniture collections can certainly fall back on classic design, they should still possess the capacity to surprise us, too. Enter Decorage, which excels at pairing touches of glamour with a modern sense of style. For example, its sleek lines are paired with metal that sparkles and pops, while a Snowflake marble contrasts with the dark Cerused Mink finish featured on quartered white oak. In addition, the wood is meticulously wire-brushed, cerused, and spattered to enhance the grain and reveal warm undertones, all to dramatic effect. The contemporary appeal continues with the collection's quadrilateral shapes and clean lines. Meanwhile, a truly unique material mix of hand-painted marbling and stainless steel and jewelry-like hardware in a Silver Mist finish only adds to the collection's refined feel. With Decorage, sophistication has never felt so subtle—and your living spaces have never looked any better.





STRIKING EFFECT

One of Decorage’s most compelling features is the dark Cersed Mink finish found on quartered white oak. When paired with the elegant Silver Mist finish used for the collection’s hardware and accents, the results are truly stunning.



SHOWN:
380-131 Sideboard
380-331 Mirror
380-356 Display Cabinet

380-272/380-273 Round Pedestal Dining Table
380-561 Side Chair
N1031L Delta Ottoman





CONTRAST AND DRAMA

Decorage glitters and gleams due to its unique mix of materials. Here clean metal moldings and geometric hardware in a warm Silver Mist finish serve as a modern touch, while Snowflake marble and hand-painted marbling pop against the dark, rich veneers.



SHOWN:
380-132 Buffet
380-331 Mirror
380-221 Dining Table
380-541 Side Chairs



REFINED TOUCH

Decorage offers a refined, sophisticated look, but its ability to surprise you is what makes it exceptional. Though the traditional roots are clearly evident, the collection’s clean lines and pared back forms serve as proof of its modern allure.



SHOWN:
380-121 End Table
380-123 Chairside Table
380-510 Desk
380-541 Side Chair
N1913 Isaac Chairs
N4202 Pisa Ottoman





MODERN APPEAL

Traditional antecedents are visible in the shapes of Decorage, but the forms have been updated with sleeker lines and geometric shapes. While contrasting materials and finishes offer hints of glamour, the overall design aesthetic is subtle yet sophisticated giving the collection a distinctive modern appeal.



SHOWN:
 380-910 Console Table
 380-127 Round End Table
 380-011 Square Cocktail Table
 380-112 Drink Table
 380-111 End Table
 B4022 Marco Chairs
 N4202 Pisa Ottomans
 N91 Franco Sectional



VISUAL APPEAL

Decorage’s strength is in the way it seamlessly merges materials like veneer, marble, and metal. However, its brilliance is also apparent in smaller choices such as the metal molding and jewelry-like hardware found on the collection’s case pieces.



SHOWN:
380-118 Tall Chest
380-051 Dresser
N6802 Meredith Chair
N1913 Isaac Chair





SOPHISTICATED STYLE

Decorage was inspired by traditional forms, but it has been transformed into something fresh and new – with the textural finish, hand-painted marble and gleaming metal. The overall effect is something familiar, yet modern with a sophistication that will appeal to many.

SHOWN:
380-H06/FR06 Upholstered Panel Bed
380-234 Nightstands
380-054 Dresser
380-509 Bench





INDEX

380-221 DINING TABLE

W 80 (104) | D 44 | H 30 in.
W 203.20 (264.16) | D 111.76 | H 76.20 cm.

Ash solids and quartered white oak veneers. One 24" leaf. Stainless steel inlay in Silver Mist finish on top and leaf. Stainless steel collar at top of each leg in Silver Mist finish. Adjustable glides. Cerused Mink finish.

pages 4, 5, 7






380-272 ROUND DINING TABLE TOP
380-273 PEDESTAL DINING TABLE BASE

Overall Diameter: 60 | H 30 in.
Overall Diameter: 152.40 | H 76.20 cm.

Ash solids and quartered white oak veneers. Fancy face top with stainless steel inlaid border in Silver Mist finish. Cast pedestal base in Hand-Painted Marble finish. Adjustable glides. Cerused Mink finish.

pages Front Cover, 3, 22, Back Cover






380-541 SIDE CHAIR

W 20-3/4 | D 27-3/4 | H 40 in.
W 52.71 | D 70.49 | H 101.60 cm.

Seat Height: 18-5/8 in. | 47.31 cm.
Seat Depth: 19 in. | 48.26 cm.
Fabric shown: B372
Upholstered box seat and inback with top stitching. Upholstered outback with welt. Hand cut-out in center, upper chair back. Solid ash in Cerused Mink finish.
Also available in other fabrics excluding leathers, silks and pillow fabrics; order as 380-X41.
pages 4, 5, 7, 11






380-542 ARM CHAIR

W 23 | D 27-3/4 | H 40 in.
W 58.42 | D 70.49 | H 101.60 cm.

Arm Height: 25-5/8 in. | 65.09 cm.
Seat Height: 18-5/8 in. | 47.31 cm.
Seat Depth: 19 in. | 48.26 cm.
Fabric shown: B372
Upholstered box seat and inback with top stitching. Upholstered outback with welt. Hand cut-out in center, upper chair back. Solid ash in Cerused Mink finish.
Also available in other fabrics excluding leathers, silks and pillow fabrics; order as 380-X42.
pages 4, 5






380-561 SIDE CHAIR

W 22 | D 25 | H 38 in.
W 55.88 | D 63.50 | H 96.52 cm.

Seat Height: 19 in. | 48.26 cm.
Seat Depth: 19-1/16 in. | 48.42 cm.
Fabric shown: B428
Upholstered seat with welt around seat bottom. Upholstered inback and outback. Solid ash in Cerused Mink finish.
Also available in other fabrics excluding leathers, silks and pillow fabrics; order as 380-X61.
pages Front Cover, 3, 22, Back Cover





380-131 SIDEBOARD

W 75-3/16 | D 20 | H 34 in.
W 190.98 | D 50.80 | H 86.36 cm.

Ash solids and quartered white oak veneers. Three wood-framed doors with inset stainless steel border in Silver Mist finish and soft/self closing hinges. Behind paired left/center doors are two compartments, two drawers with hand cut-outs, ventilation holes and four covered grommet holes in back panel. Left drawer has wrapped pad. Right drawer has silverware insert. Behind right door are two adjustable/removable shelves, ventilation holes and one grommet in back panel. Tubular stainless steel base in Silver Mist finish. Adjustable glides. Anti-tip kit. Cerused Mink finish.

page 2





380-132 BUFFET

W 84 | D 20 | H 34 in.
W 213.36 | D 50.80 | H 86.36 cm.

Ash solids and quartered white oak veneers. Three drawers with laminated snowflake marble drawer fronts. Top drawer has silverware insert. Second and third drawers have wrapped pads. Three doors with soft/self-closing hinges. Laminated snowflake marble door fronts. Inset stainless steel frame on front of case in Silver Mist finish. Behind left door are two adjustable/removable shelves, ventilation holes and one covered grommet hole in back panel. Behind paired center/right doors are two adjustable/removable shelves, ventilation holes and one covered grommet hole in back panel. Adjustable glides. Anti-tip kit. Cerused Mink finish.
pages 4, 5, 6, 7, 22



380-356 DISPLAY CABINET

W 48 | D 19 | H 84 in.
W 121.92 | D 48.26 | H 213.36 cm.

Ash solids and quartered white oak veneers. Two wood-framed doors with inset tempered glass panels. Stainless steel border around each panel in Silver Mist finish. Behind doors is one fixed and two adjustable/removable, wood-framed glass shelves with plate grooves and two halogen puck lights with touch dimmer switch. Each shelf has two inset, tempered glass panels. White interior. Pad feet with adjustable glides. Anti-tip kit. Cerused Mink finish.
pages Front Cover, 3, Back Cover



380-H06/FR06 UPHOLSTERED PANEL BED (KING)

Overall: W 82-5/8 | D 88-1/4 | H 72 in.
Overall: W 209.87 | D 224.16 | H 182.88 cm.

Fabric shown: B371
Slat Height: 6-3/4 in. | 17.15 cm.
Upholstered headboard and footboard with inset stainless steel frame overlay inside of upholstered border in Silver Mist finish. Square fabric-covered buttons on inside front headboard panel and outside front footboard panel. Upholstered side rails. Three slat support system with center adjustable supports.
Headboard cannot be used alone.
Also available in other fabrics excluding leathers, silks and pillow fabrics; order as 380-XH06/XFR6.
pages 18, 19, 20, 21, 23

Also available:
380-H04/FR04 UPHOLSTERED PANEL BED (QUEEN)
Overall: W 66-5/8 | D 88-1/4 | H 68 in.
Overall: W 169.23 | D 224.16 | H 172.72 cm.
Also available in other fabrics excluding leathers, silks and pillow fabrics; order as 380-XH04/XFR4.

380-H05/FR05 UPHOLSTERED PANEL BED (CALIFORNIA KING)
Overall: W 78-5/8 | D 92-1/8 | H 72 in.
Overall: W 199.71 | D 234.00 | H 182.88 cm.



380-051 DRESSER
W 68 D 20 H 36 in. W 172.72 D 50.80 H 91.44 cm.
Ash solids and quartered white oak veneers. Stainless steel reveal under top and bottom of case in Silver Mist finish. Six drawers. Center support leg. Adjustable glides. Anti-tip kit. Cerused Mink finish. <i>page 17</i>



380-054 DRESSER
W 72 D 20 H 44 in. W 182.88 D 50.80 H 111.76 cm.
Ash solids and quartered white oak veneers. Eight drawers. Stainless steel frame around each bank of drawers in Silver Mist finish. Adjustable glides. Anti-tip kit. Cerused Mink finish. <i>pages 21, 35</i>



380-228 NIGHTSTAND
W 26 D 18 H 30-1/8 in. W 66.04 D 45.72 H 76.52 cm.
Ash solids and quartered white oak veneers. Stainless steel reveal under top and at bottom of case in Silver Mist finish. Three drawers. Adjustable glides. Anti-tip kit. Cerused Mink finish. <i>pages 19, 22</i>



380-229 NIGHTSTAND
W 34 D 19 H 30-1/8 in. W 86.36 D 48.26 H 76.52 cm.
Ash solids and quartered white oak veneers. Stainless steel reveal under top and at bottom of case in Silver Mist finish. Three drawers. Adjustable glides. Anti-tip kit. Cerused Mink finish. <i>page 18</i>



380-234 NIGHTSTAND
W 36 D 19 H 29-3/4 in. W 91.44 D 48.26 H 75.57 cm.
Ash solids and quartered white oak veneers. Inset tempered glass top with compartment underneath. Compartment has a fixed shelf surface and is open front-to-back and side-to-side. Two drawers. Stainless steel frame around drawer bank in Silver Mist finish. Adjustable glides. Anti-tip kit. Cerused Mink finish. <i>pages 20, 21</i>



380-118 TALL CHEST
W 38 D 19 H 54 in. W 96.52 D 48.26 H 137.16 cm.
Ash solids and quartered white oak veneers. Inset quartered white oak veneer top, end panels and drawers fronts. Stainless steel frame in Silver Mist finish. Six drawers. Adjustable glides. Anti-tip kit. Cerused Mink finish. <i>page 16</i>



380-011 SQUARE COCKTAIL TABLE
W 44 D 44 H 18-7/16 in. W 111.76 D 111.76 H 46.83 cm.

Ash solids and quartered white oak veneers. Inset round mirrored glass in center with stainless steel gallery in Silver Mist finish. Heavy duty, non-marring ball casters. Cerused Mink finish.
pages 13, 14, 15



380-021 RECTANGULAR COCKTAIL TABLE
W 59-7/8 D 28 H 17 in. W 152.08 D 71.12 H 43.18 cm.

Solid ash and quartered white oak veneers. Three inset laminated snowflake marble panels on top. Stainless steel collars on top of posts in Silver Mist finish. Adjustable glides. Cerused Mink finish.
pages 8, 9, 23



380-111 END TABLE
W 24 D 24 H 24 in. W 60.96 D 60.96 H 60.96 cm.

Ash solids and quartered white oak veneers. Inset laminated snowflake marble top. Adjustable glides. Cerused Mink finish.
pages 13, 15



380-112 DRINK TABLE
W 16 D 16 H 24 in. W 40.64 D 40.64 H 60.96 cm.

Ash solids and quartered white oak veneers. Stainless steel rim around top and attachment rod in Silver Mist finish. Adjustable glides. Cerused Mink finish.
pages 13, 15



380-121 END TABLE
W 28 D 18 H 24 in. W 71.12 D 45.72 H 60.96 cm.

Quartered white oak veneers. Tubular stainless steel base in Silver Mist finish. Two fixed shelves. Open side-to-side design. Adjustable glides. Cerused Mink finish.
Note: Back is fully finished.
pages 9, 10



380-123 CHAIRSIDE TABLE
Diameter: 18 H 25 in. Diameter: 45.72 H 63.50 cm.

Laminated snowflake marble top. Tubular stainless steel base. Adjustable glides. Silver Mist finish.
pages 8, 10, 23



380-127 ROUND END TABLE
Diameter: 26 H 25 in. Diameter: 66.04 H 63.50 cm.



Ash solids and white oak veneers. Fancy face top with cast conical shaped pedestal base. Stainless steel sheet metal band around bottom of base in Silver Mist finish. Adjustable glides. Cerused Mink finish.

pages 12, 13, 14, 22



380-910 CONSOLE TABLE
W 68 D 16 H 30 in. W 172.72 D 40.64 H 76.20 cm.

Ash solids and quartered white oak veneers. Stainless steel face plate on front and back in Silver Mist finish. Adjustable glides. Cerused Mink finish.

pages 12, 14, Inside Back Cover



380-506 BENCH
W 18 D 18 H 19 in. W 45.72 D 45.72 H 48.26 cm.



Fabric shown: B372
Ash solids and quartered white oak veneers. Upholstered box seat with top stitching. Adjustable glides. Cerused Mink finish.
Also available in other fabrics excluding leathers, silks and pillow fabrics; order as 380-X06.
pages 18, 19

380-509 BENCH
W 51-3/8 D 17-3/8 H 18-1/2 in. W 130.49 D 44.13 H 46.99 cm.

Fabric shown: B371
Upholstered box seat with top stitching. Tubular stainless steel base and stretcher. Adjustable glides. Silver Mist finish.
Also available in other fabrics excluding leathers, silks and pillow fabrics; order as 380-X09.
page 21



380-510 DESK
W 60 D 30 H 30 in. W 152.40 D 76.20 H 76.20 cm.

Ash solids and quartered white oak veneers. Inset laminated snowflake marble top. Three drawers. Tubular stainless steel base with stretcher. Adjustable glides. Cerused Mink finish.

pages 11, 23



380-331 MIRROR
W 38 D 1-1/4 H 48 in. W 96.52 D 3.18 H 121.92 cm.

Open wood frame of solid ash. Non-beveled mirrored glass. Can be hung vertically or horizontally. Cerused Mink finish,
Note: Due to weight, must be hung on stud.
pages 2, 3, 4, 5, 6, 7



380-333 MIRROR
W 40 | D 1-3/4 | H 40 in.
W 101.60 | D 4.45 | H 101.60 cm.

Quartered white oak veneers. Frame consists of four sections, surrounding a center of non-beveled mirrored glass framed in stainless steel in Silver Mist finish. Cerused Mink finish.
Note: Due to weight, must be hung on stud.
page 35



380-870 ENTERTAINMENT CONSOLE
W 80 | D 20 | H 30 in.
W 203.20 | D 50.80 | H 76.20 cm.

TV Area W 75 | D 15 in.
W 190.50 | D 38.10 cm.
Ash solids and quartered white oak veneers. Inset quartered white oak veneer top and end panels. Tubular stainless steel frame in Silver Mist finish. Four touch-latch doors with laminated snowflake marble door fronts. Behind each pair of doors are two adjustable/removable shelves, ventilation holes and one covered grommet hole in back panel. Adjustable glides. Anti-tip kit. Cerused Mink finish.
pages Inside Front Cover, 15



SIGNATURE ELEMENTS



INSPIRATION

Though traditional antecedents are evident, the classic forms of Decorage have been updated to have a more modern slant. While contrasting materials and finishes offer a hint of glamour, the designs remain subtle and sophisticated.



ARTISTRY

Decorage’s contemporary appeal is apparent in its clean lines, quadrilateral shapes, and simple forms. Metal and wood molding, marble inlays, contrasting finishes and materials, only reinforce the artistic feel.



ACCENTS

The collection’s unique mix of materials and finishes is another aspect that gives it a singular sense of style. Elements include Snowflake marble, hand-painted marbling, and nickel-plated stainless steel in a warm Silver Mist finish.

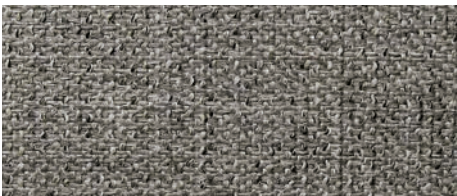


HARDWARE

Nickel-plated, zinc features the same Silver Mist finish found on the collection’s metal accents. Linear shapes like rectangles and squares, along with substantial ring pulls, give the hardware a jewelry-like feel on case pieces.

FABRICS

When it comes to fabrics, these elegant tones serve as ideal companions for the collection’s Cerused Mink wood finish, Snowflake marble, and Silver Mist accents and hardware. The beige and grey hues complement Decorage’s contemporary appeal, all while letting the artistry of its pieces do the heavy lifting.



B371



B372

UPHOLSTERY FEATURED

N1031L Delta Ottoman
Leather No. 235-444
pages Front Cover, 3, 22

N3597Y Aubree Sofa
Fabric No. 1345-002
pages 8, 23

N1913 Isaac Chair
Fabric No. 1078-067
pages 9, 10, 17, 19, 22

N4202 Pisa Ottoman
Fabric No. 2278-120
pages 11, 12, 14, Inside Back Cover

N4022 Marco Chair
Fabric No. 1397-023
pages 12, 14

N91 Franco Sectional
Fabric No. 1347-020
pages 13, 15

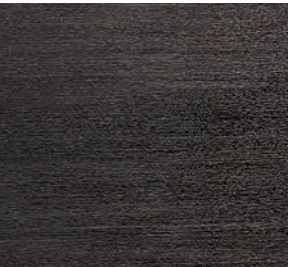
N6802 Meredith Chair
Fabric No. 1065-002
page 16

ADDITIONAL IMAGES FEATURED

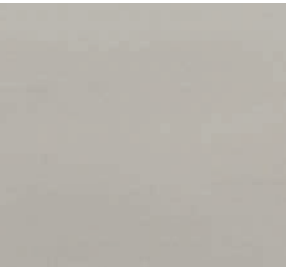
COVER: 380-272/380-273 Round Pedestal Dining Table, 380-561 Side Chairs, 380-356 Display Cabinets, N1031L Delta Ottoman
INSIDE FRONT COVER: 380-870 Entertainment Console
PAGES 4-5: 380-221 Dining Table, 380-541 Side Chairs, 380-542 Arm Chairs, 380-132 Buffet, 380-331 Mirror
PAGES 8-9: 380-021 Rectangular Cocktail Table, 380-121 End Table, 380-123 Chairside Table, N3597Y Aubree Sofa, N1913 Isaac Chairs
PAGES 14-15: 380-011 Square Cocktail Table, 380-127 Round End Table, 380-111 End Table, 380-112 Drink Table, 380-910 Console Table, 380-870 Entertainment Console, N4022 Marco Chairs, N4202 Pisa Ottomans, N9192 Franco Left Arm Sofa, N9132 Franco Corner Chair, N9141 Franco Right Arm Loveseat
PAGES 18-19: 380-H06/FR06 Upholstered Panel Bed, 380-229 Nightstand, 380-228 Nightstand, 380-506 Benches, N1913 Isaac Chair
PAGES 22-23: 380-228 Nightstand, 380-127 Round End Table, 380-272/380-273 Round Pedestal Dining Table, 380-561 Side Chair, 380-021 Rectangular Cocktail Table, 380-123 Chairside Table, 380-132 Buffet, 380-H06/FR06 Upholstered Panel Bed, 380-510 Desk, N3597Y Aubree Sofa, N1913 Isaac Chair, N1031L Delta Ottoman
PAGE 35: 380-333 Mirror, 380-054 Dresser
INSIDE BACK COVER: 380-910 Console Table, N4202 Pisa Ottomans

WOODS, FINISHES & MATERIALS

After the quartered white oak has been wire-brushed to open the pores and grain of the veneers, a layer of cerusing creates a dramatic yet casual Cerused Mink finish. As a final touch, spatter is added to create a sense of depth. Unique materials such as stainless steel accents in a Silver Mist finish, Snowflake marble and hand-painted marbling add contrast and one-of-a-kind appeal.



Cerused Mink



Silver Mist



Snowflake Marble



Hand-Painted Marble



Many high quality, natural materials, such as wood, veneer, glass, rubber, metal, plastic, cloth and/or stone, are used in our products and may reflect grain, vein or color variations. These variations are inherent in their species and enhance the unique beauty of each piece of furniture. Due to the photographic and printing processes used in the creation of this catalog, the finish and fabric colors displayed may vary from actual finish and fabric colors. Authorized Bernhardt retailers carry a variety of our furniture pieces and collections, so please contact them about the specific products at their location. Bernhardt uses materials and resources sourced globally to ensure a quality product. Specifications subject to change without notice. Copyright © 2018 Bernhardt Furniture Company. Printed in the USA 03/2018 GVS 4.8K.

